



**AT-HOME WORKBOOK**

**FIRST YEAR STUDENTS**

**VOLUME 1 • SPRING 2020**



# DEAR PARENTS,

The following worksheets and exercises are designed to spark curiosity and bring joy to your child / children.

The contents are categorized by Language Arts and Mathematics, and have been selected according to the number of years that your child has been enrolled in our Early Childhood Program.

We hope you and your children enjoy!

Warmest Regards,  
Carolyn Chapman

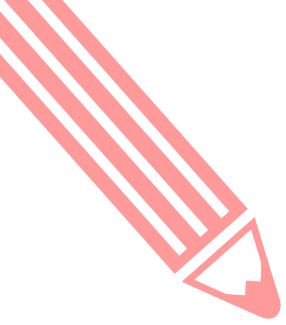
**HEAD OF SCHOOL**

---

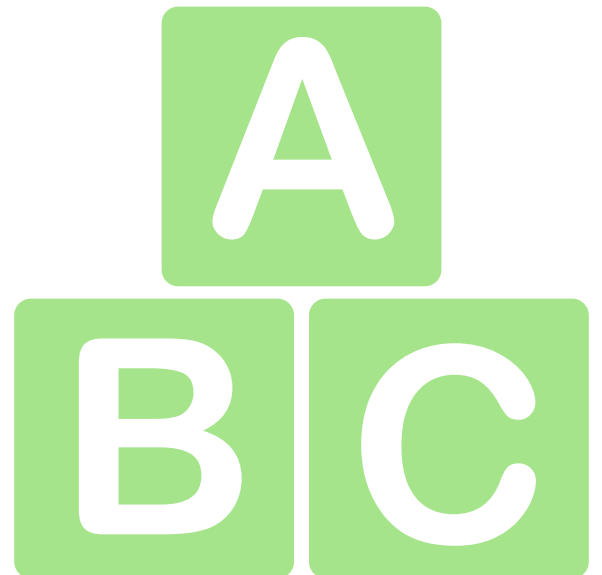
## CONTENTS:

- LANGUAGE ARTS
- MATHEMATICS



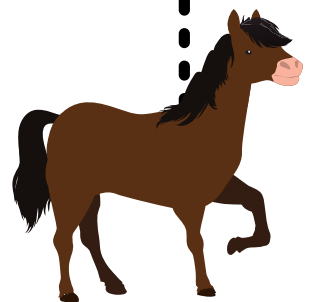
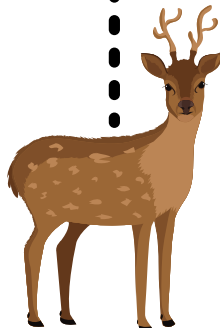
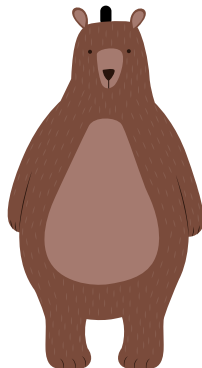
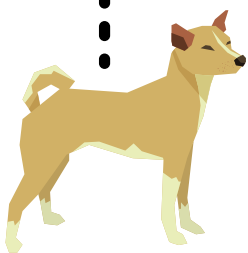


# LANGUAGE ARTS



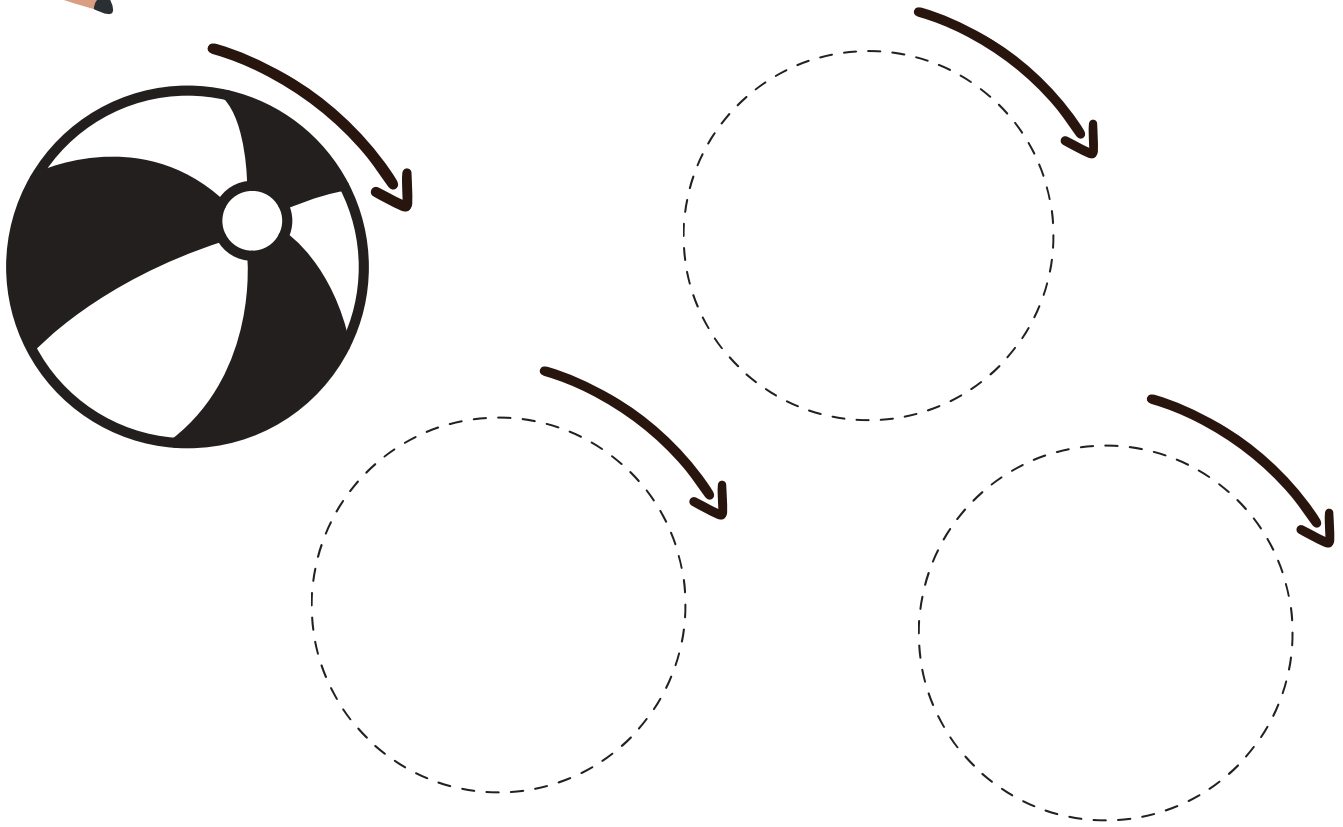


# Help the baby animals get to their mothers.

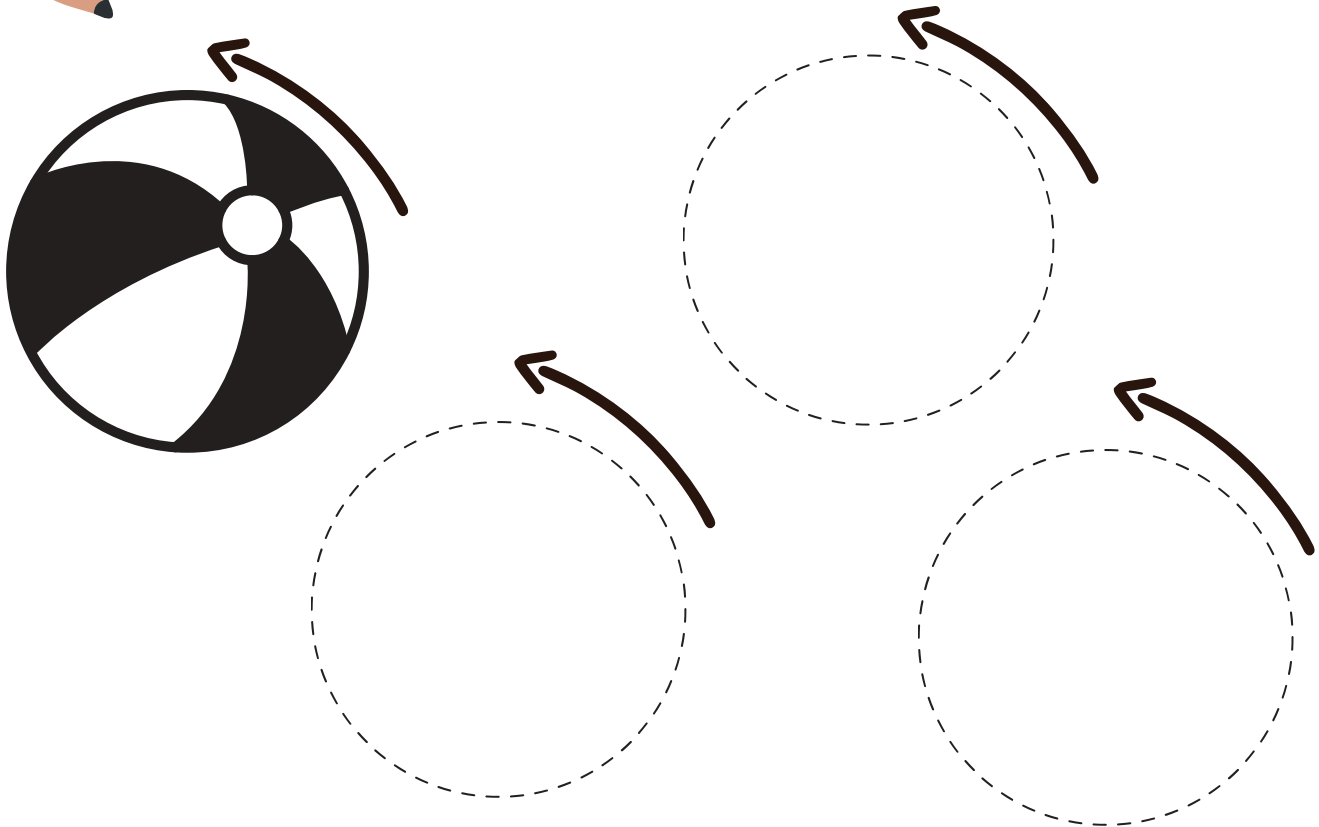




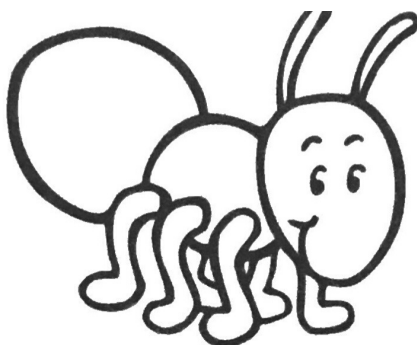
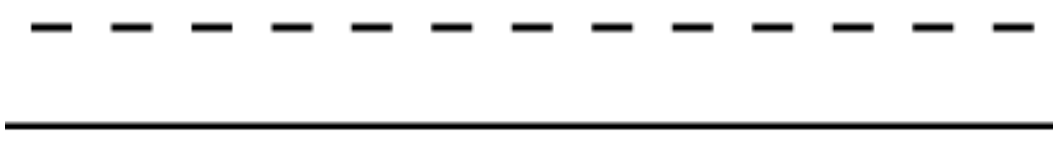
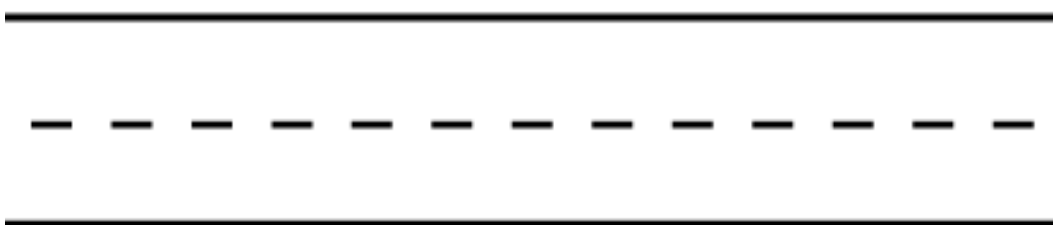
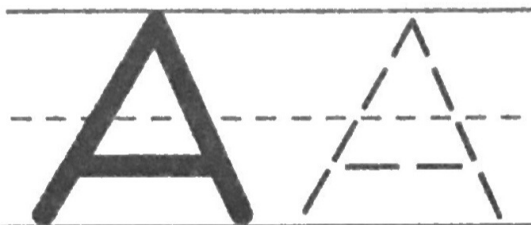
# Trace the circles forward.



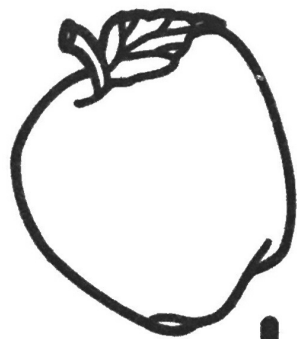
# Trace the circles backwards.



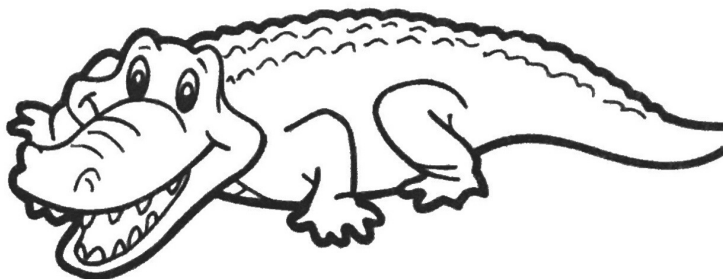
 Trace the letters and  color the pictures.



 ant



 pple



 lligator

 Trace the letters and  color the pictures.

B B

\_\_\_\_\_

-----

\_\_\_\_\_

b b

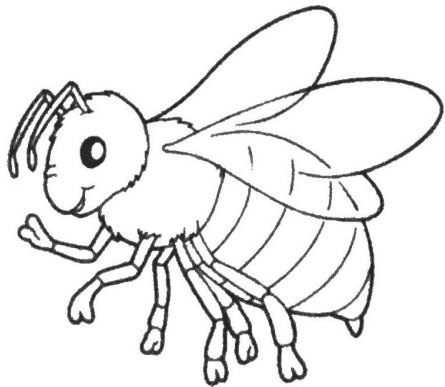
\_\_\_\_\_

-----

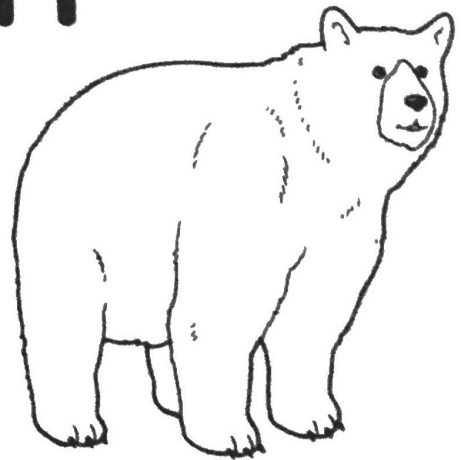
\_\_\_\_\_



balloon



bee



bear

 Trace the word and  color the pictures.

red red



cherries



apple



sign



ladybug



wagon

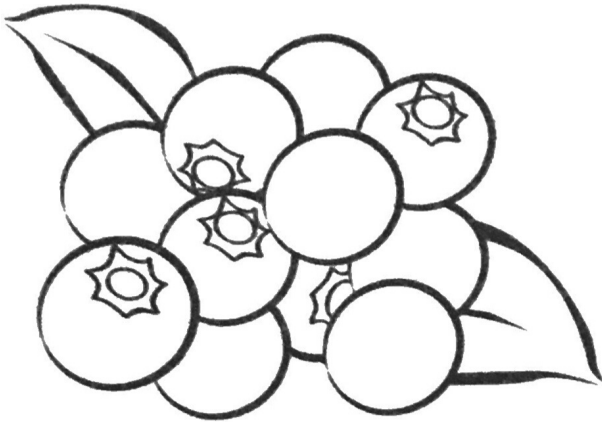
 Trace the word and  color the pictures.

blue blue

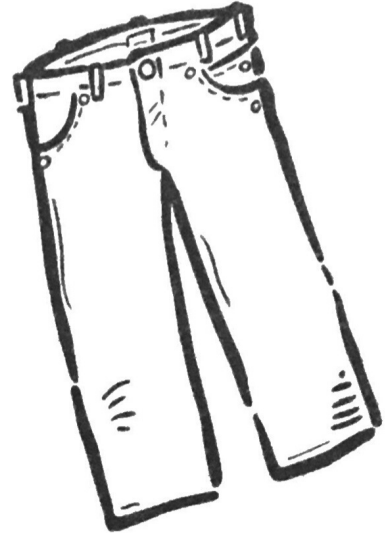
\_\_\_\_\_

-----

\_\_\_\_\_



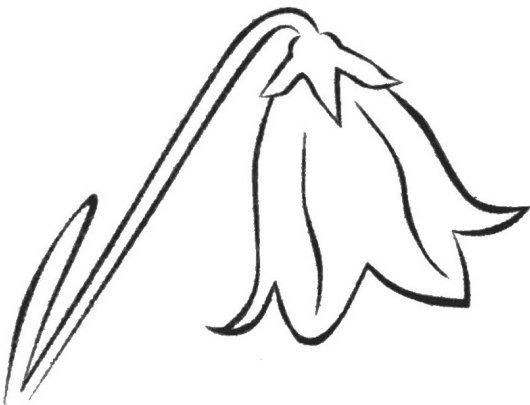
blueberries



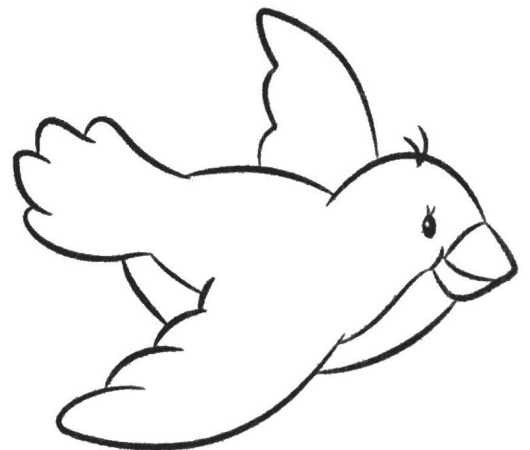
jeans



crayon



bluebell

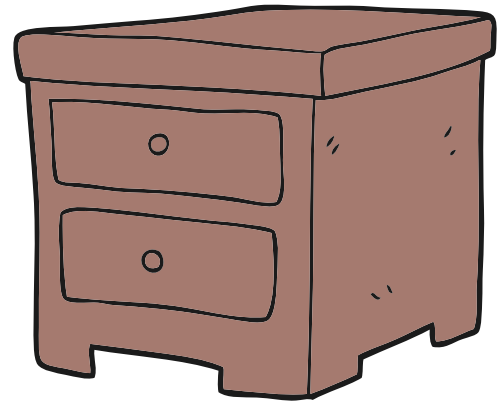


bluebird

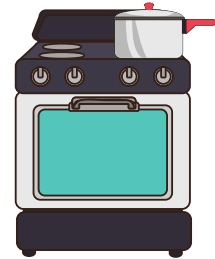
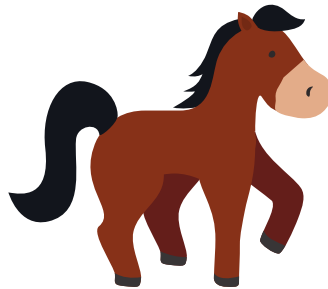
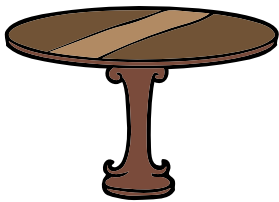
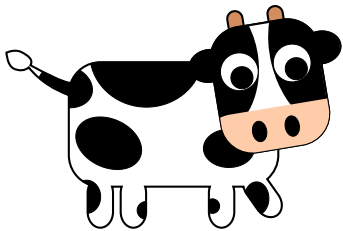
# Where does it belong?



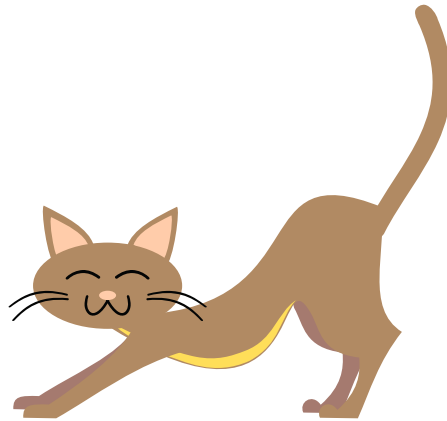
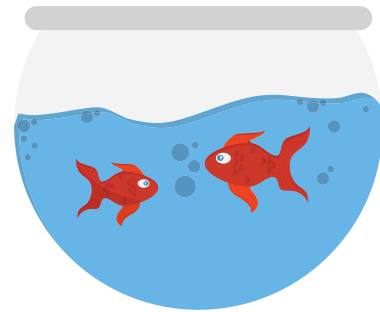
belong in a

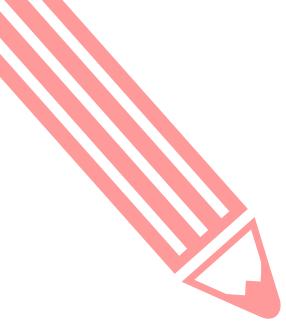


Draw a line to where each thing belongs.



Draw a line to where each thing belongs.

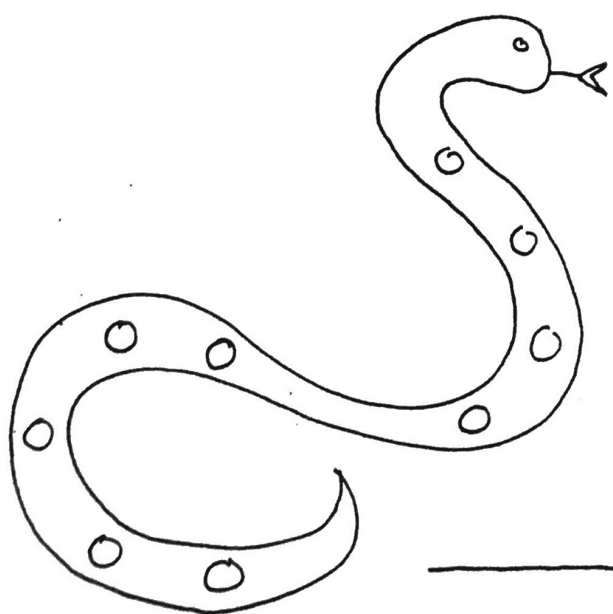
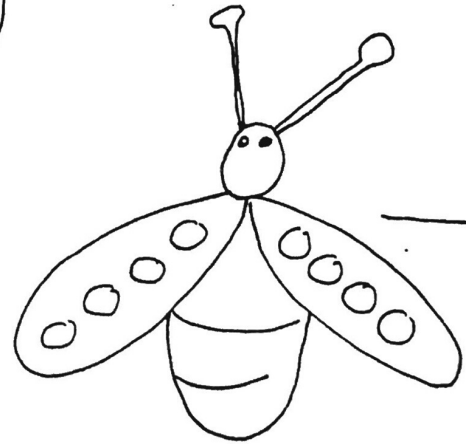
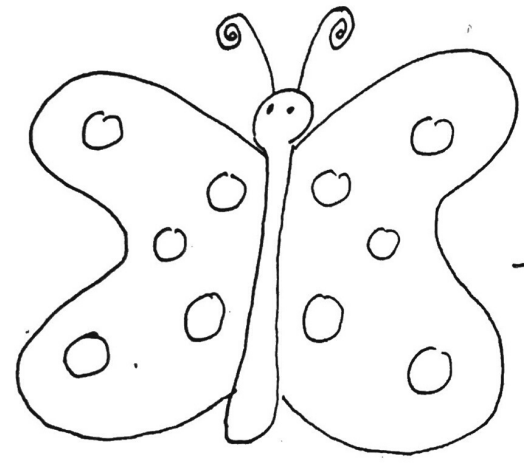
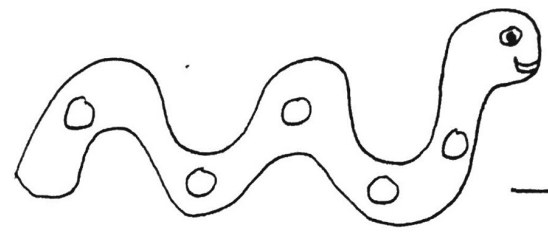
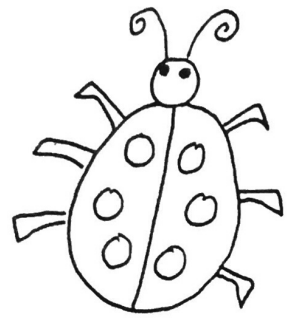




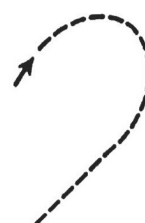
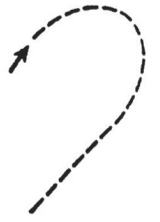
# MATHEMATICS

$$1 + 2 = 3$$

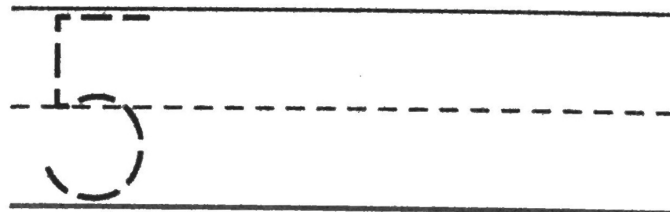
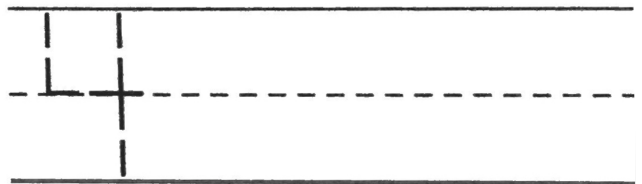
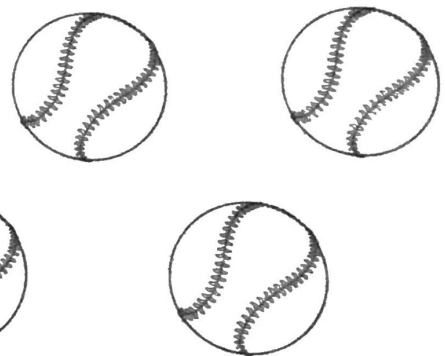
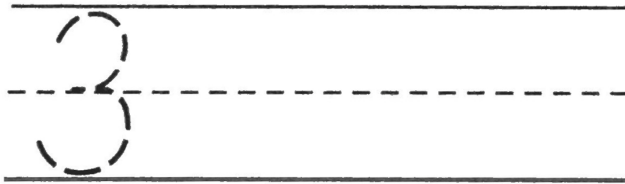
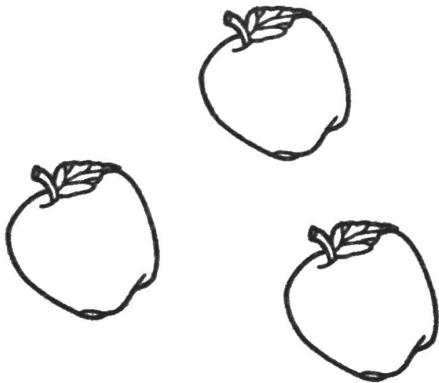
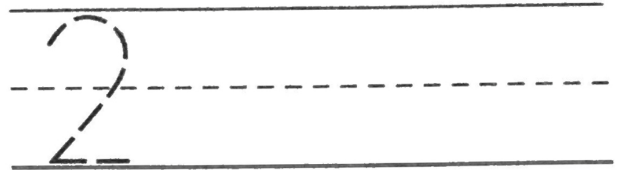
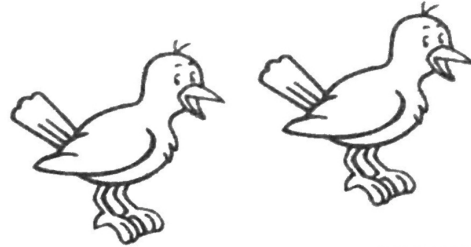
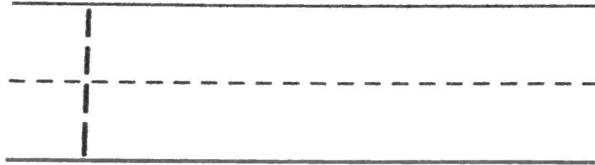
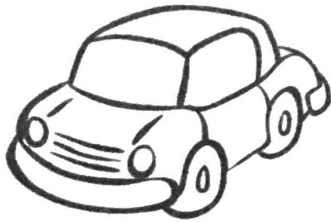
How many spots are there?



Trace the number.

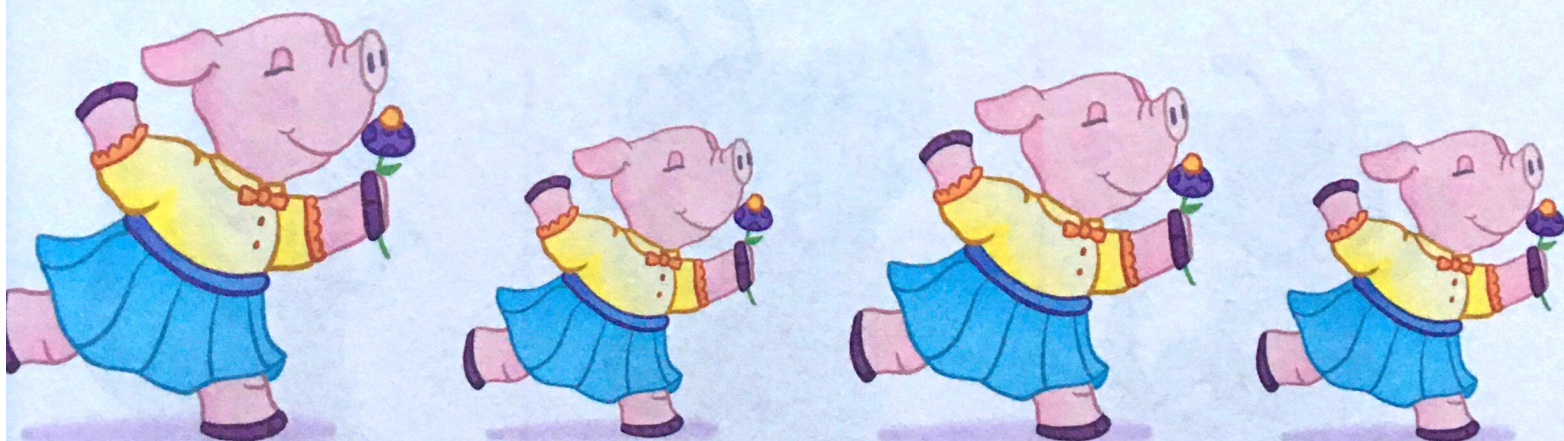
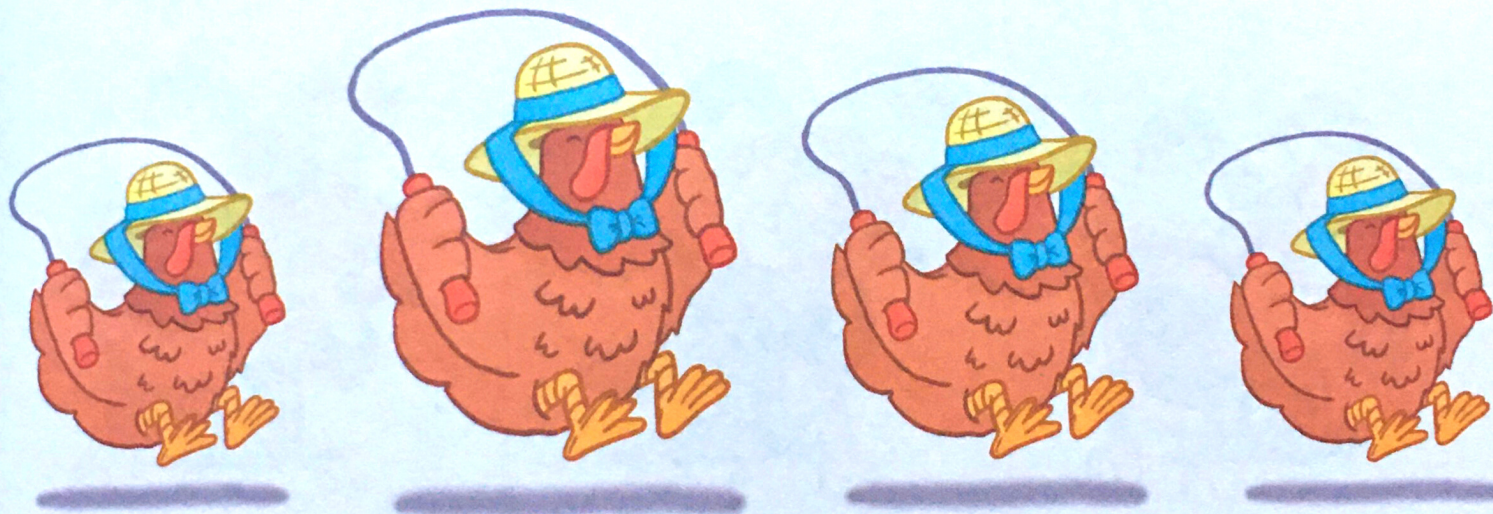


 Write the numbers and  color the pictures.



# Double Vision

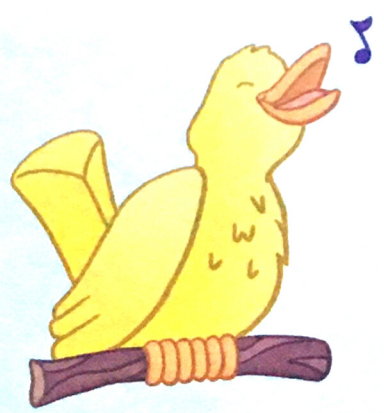
Circle the pictures that are the **same** size.



Circle the picture that is **bigger** than the first one.



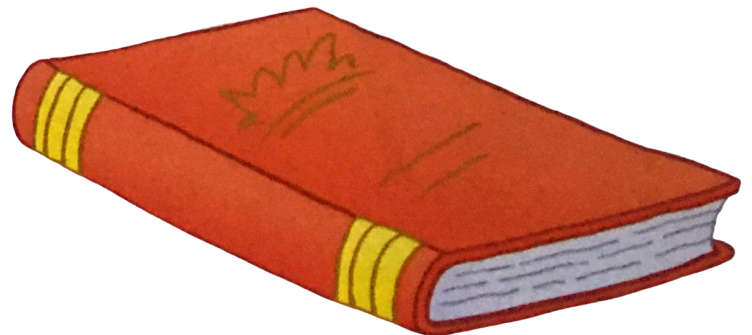
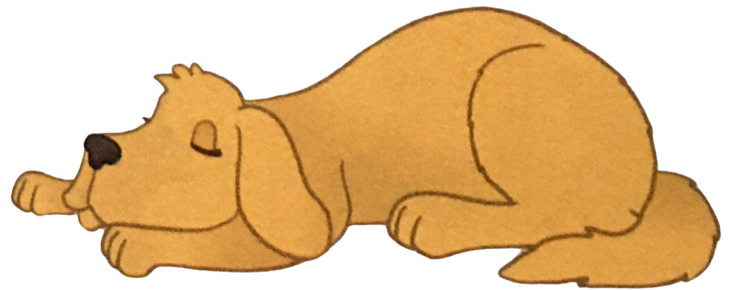
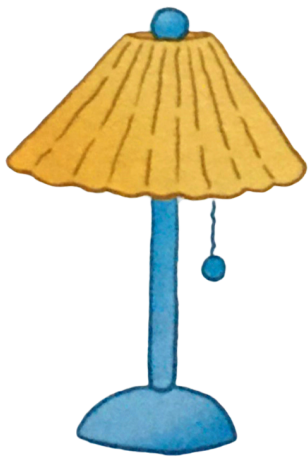
Circle the picture that is **smaller** than the first one.



# 1 one



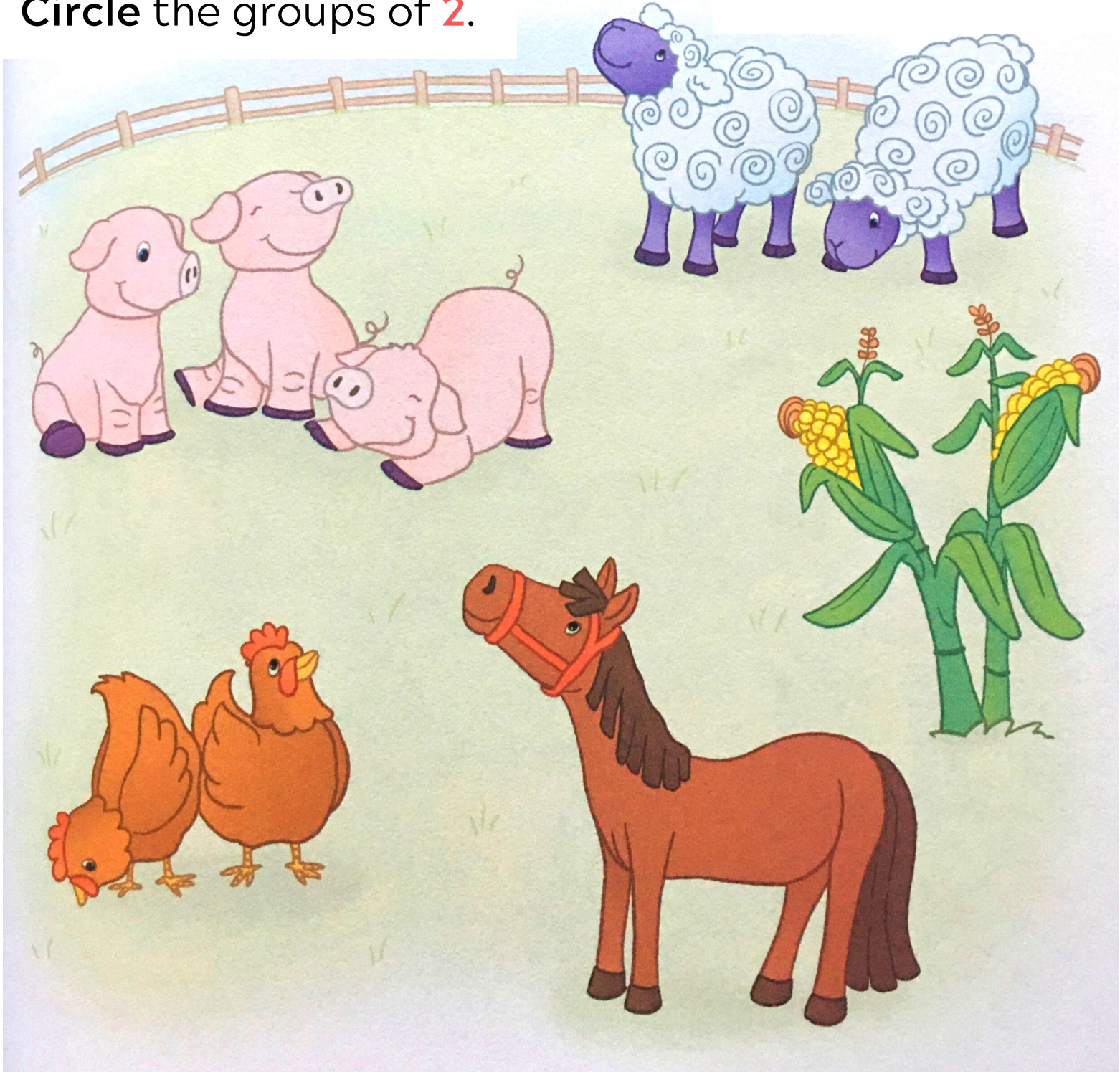
Circle everything that there is only **one** of below.



# 2 two



Circle the groups of 2.



Circle the group that shows the **same** number as the first one.

